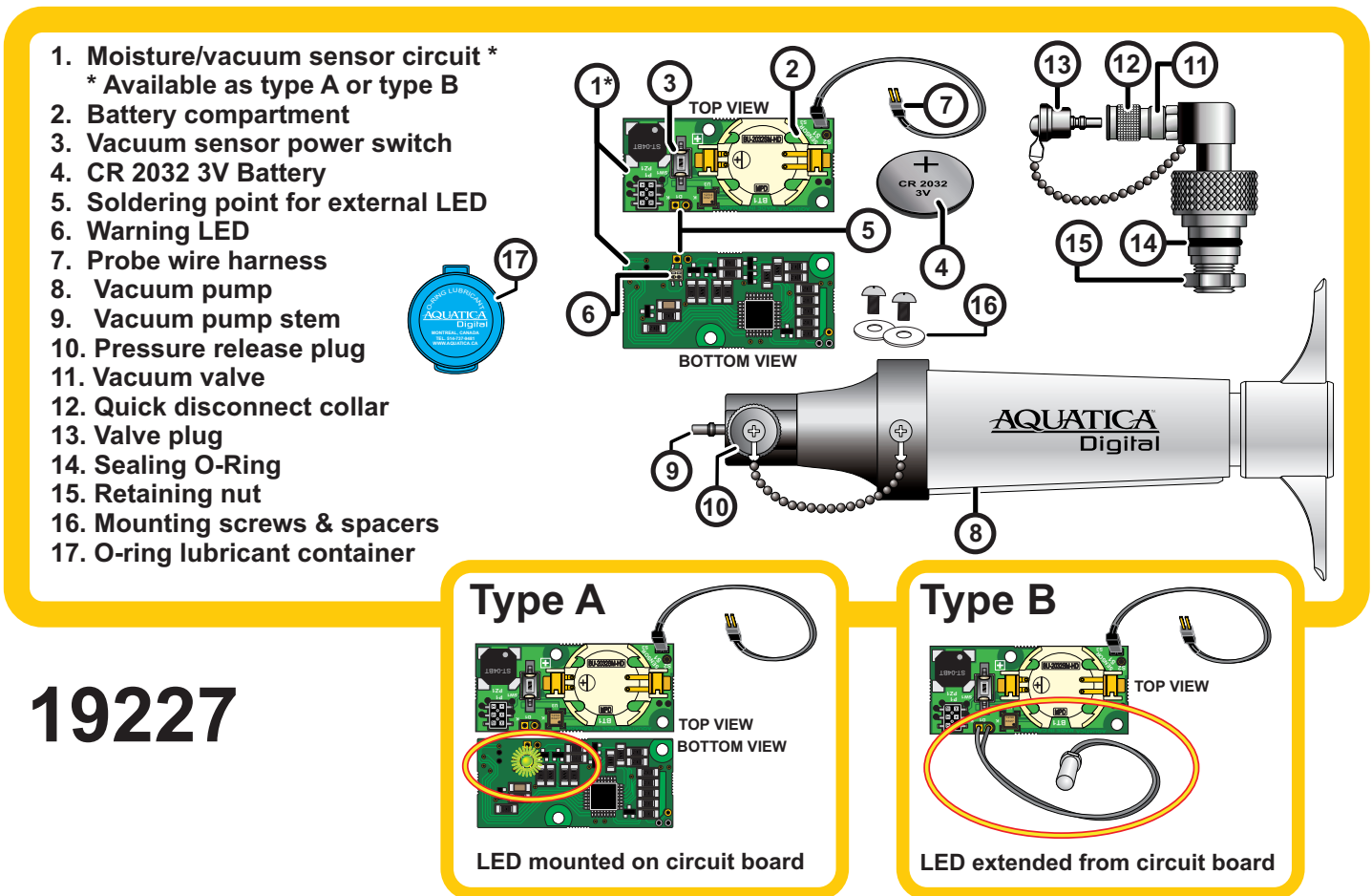


## Surveyor compatibility

AQUATICA housing models supported by the SURVEYOR moisture and vacuum sensor system.



The Aquatica Surveyor moisture and vacuum sensor circuit comes in two versions, the type A and Type B. the model of housing it is destined for will decide which of the two versions will be needed.

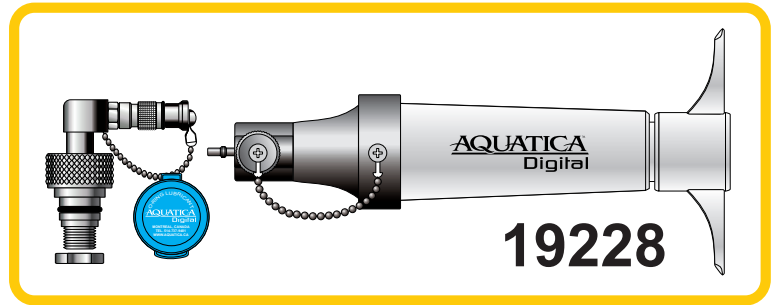
- Type A has its warning LED built into the sensor circuit board and is for housing with a dedicated LED window in the back of the housing
- Type B has the warning LED attached to a wire lead which is connected to the sensor circuit board, it is for housing having a receptacle recess hole in the rear LCD window

See the list of currently compatible housings included with this guide, if the housing you wish to adapt is not in this list, please contact us at [info@aquatica.ca](mailto:info@aquatica.ca) so that we can confirm the compatibility.

## Vacuum valve and pressure extracting pump

The # 19228 kit includes all necessary hardware for converting a housing that already is equipped with a Surveyor # 19229 (Type A or B) moisture & vacuum sensor circuit.

- Pressure valve assembly
- Vacuum extraction pump.
- All necessary hardware for installation
- Container of aquatica O-ring lubricant.



## Models of Aquatica housing adaptable to the Surveyor vacuum monitoring system.

### For Canon cameras housings

19227-A1Ds Mk III type B for AQUATICA housing for the Canon 1Ds mark III (see note 2)

19227-A5D Mk II type B for AQUATICA housing for the Canon 5D Mk II (see note 2)

19227-A5D Mk III type B for AQUATICA housing for the Canon 5D Mk III (see note 3)

19228-A5D Mk III for AQUATICA housing for the Canon 5D Mk III (see note 4)

19227-A7D type B for AQUATICA housing for the Canon7D

19228-A7D Mk II type A for AQUATICA housing for the Canon7D Mk II (see note 1)

19227-A70D type B for AQUATICA housing for the Canon 70D

19228-A1Dcx type A for AQUATICA housing for the Canon 1Dc & 1Dx (see note 1)

### For the Nikon cameras housings

19227-AD3 type B for AQUATICA housing for the Nikon D3 & D3x (see note 2)

19227-AD3s type B for AQUATICA housing for the Nikon D3s, D3x & D3 (see note 2)

19227-AD4 type B type B for AQUATICA housing for the Nikon D4 (see note 3)

19228-AD4 type B for AQUATICA housing for the Nikon D4 (see note 4)

19228-AD600 type B for AQUATICA housing for the Nikon D600 (see note 1)

19227-AD700 type B for AQUATICA housing for the Nikon D700 (see note 2)

19227-AD800 type B for AQUATICA housing for the Nikon D800 & D800e (see note 3)

19228-AD800 for AQUATICA housing for the Nikon D800 & D800e (see note 4)

19228-AD810 for AQUATICA housing for the Nikon D810 (see note 1)

19227-AD300s type B for AQUATICA housing for the Nikon D300s

19227-AD7000 type B for AQUATICA housing for the Nikon D7000 (see note 2)

19227-AD7100 type B for AQUATICA housing for the Nikon D7100

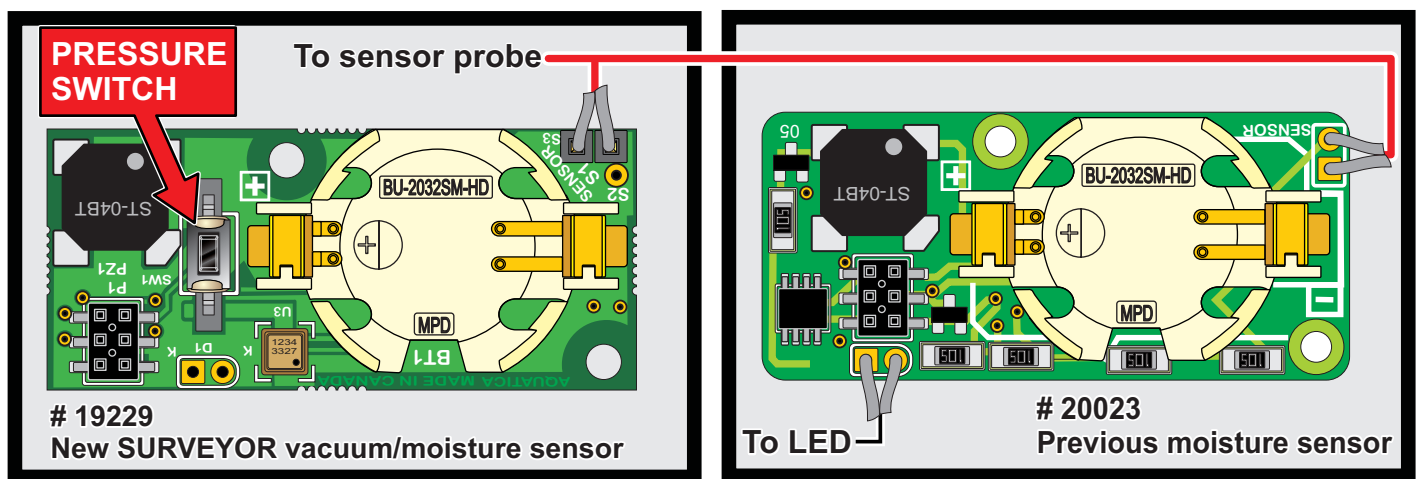


## For 4/3 Micro series cameras housings

19228-AE-M1 type A for AQUATICA housing for the Olympus OM-D E-M1 (see note 1)

19228-AGH4 type A for AQUATICA housing for the Panasonic DMC GH-4 (see note 1)

- Note 1:** This housing is supplied with Surveyor Vacuum and moisture sensor already installed, the kit includes the pump and pressure valve.
- Note 2:** This housing model originally came equipped with the earlier (# 20023) moisture alarm. To use the vacuum sensor option, it will need to be replaced with the Surveyor type B version of the sensor circuit included with this kit.
- Note 3:** Earlier versions of these housings were equipped with the moisture alarm (# 20023). Before ordering, confirm which type of moisture alarm you already have in the housing, if the circuit is of the older type (# 20023), it will need to be replaced with the Surveyor type B version of the sensor circuit included with this kit. Refer to accompanying picture to identify the version you have installed already.
- Note 4:** If the housing already has a later version Surveyor vacuum and moisture sensor already installed, then order this kit which includes the pump and pressure. Refer to accompanying picture to identify the version you have installed already.



Battery installation of the Surveyor moisture & vacuum sensor

To properly insert the battery, first locate the positive contact tabs on the holder (A), insert the battery underneath them as illustrated and (B) press down into place

